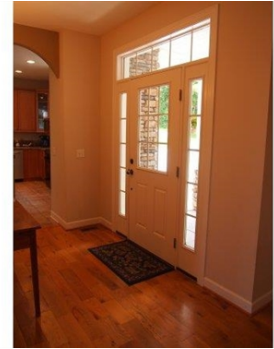


Mountain Home with Privacy and Peacefulness!



\$ 380,000



575 Sandy Flat Mountain Road, Fletcher, NC 28732

WEB: 575SandyFlatMountain.com

- » **Beds:** 3 | **Baths:** 3 Full, 1 Half
- » **MLS #:** 3511928
- » **Single Family** | 3,237 ft² | Lot: 125,017 ft² (2.87 acres)
- » **Quality Construction**
- » **Lower Level has Finished Space for Hobby or Guest Suite**
- » **Open Kitchen, Dining and Great Room**
- » **Enjoy the Perfect View from the Deck**
- » **Newly Graded Road**

QR Code



Sue Ambrose

(828) 606-0113 (cell)

sue@preferredprop.com

http://www.PreferredProp.com

Preferred Properties

Preferred Properties Of Asheville

1075 Hendersonville Road

Suite 100

Asheville, NC 28803

(828) 210-9400

This is the mountain home you will want to get away to! Top of the mountain privacy and peacefulness is yours with this location. Quality construction and efficiency will wow you. Loft area is perfect for office or play room. Lower level has finished space for hobby or guest suite. Bring your tools, there is a big shop with double doors too! The kitchen, dining and great rooms are all open. The deck is a perfect spot to enjoy the view. Newly graded road from bottom to top.

